



Canada's Experience in Maritime Dispute Management

By : Professor Gordon Houlden



China Institute
中国学院

January 26, 2016

- **Arrival of aboriginal population from Asia: 10,000 to 15,000 years ago**
 - **Earliest French and English settlement 500 years ago**
 - **Canadian territory gradually acquired from Britain, just as Canadian independence was gradually established.**
-

CHINA INSTITUTE Canada, with international, disputed, and exclusive economic zone maritime boundaries

中国学院

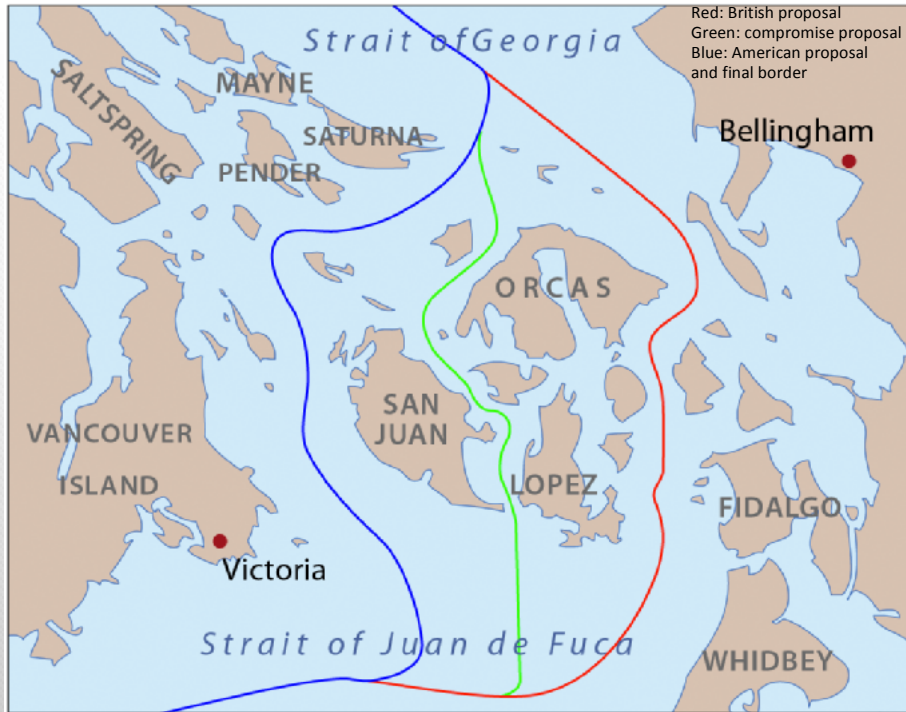




Source: Dixon Ryan Fox, *Harper's Atlas of American History*, 1920



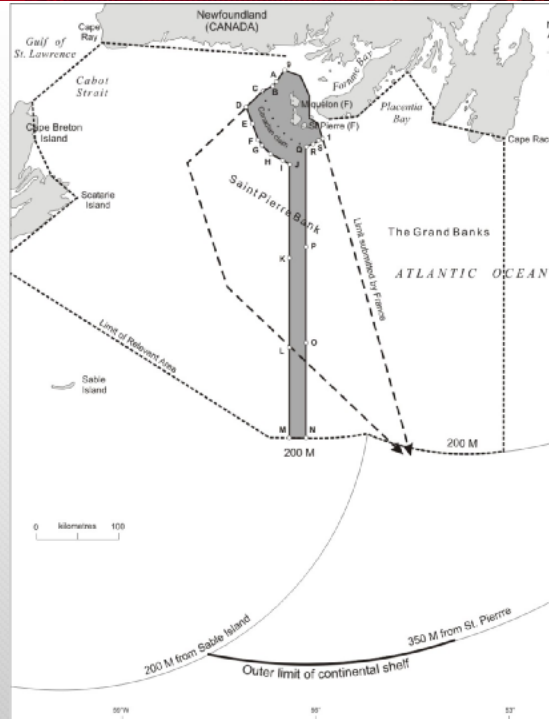
Source: University of Maine Farmington



Source: Information from Derek Hayes, *Historical Atlas of the Pacific Northwest*



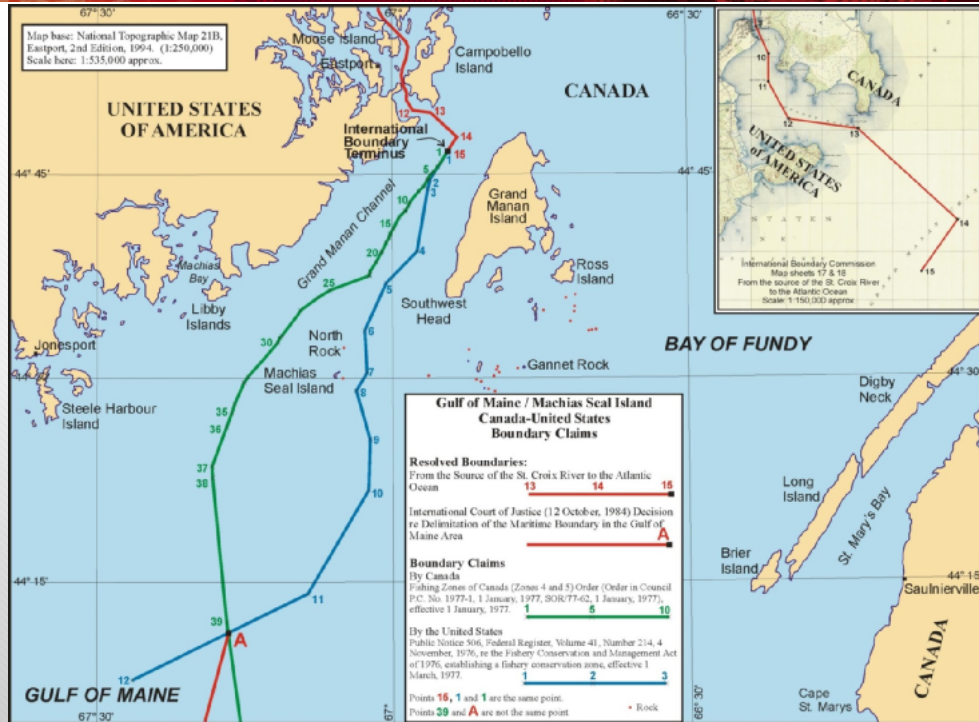
Source: Based on 1926 map by William R. Shepherd



Source: Andi Arsana, International Zeitschrift

CHINA INSTITUTE Gulf of Maine - Machias Seal Island and North Rock dispute

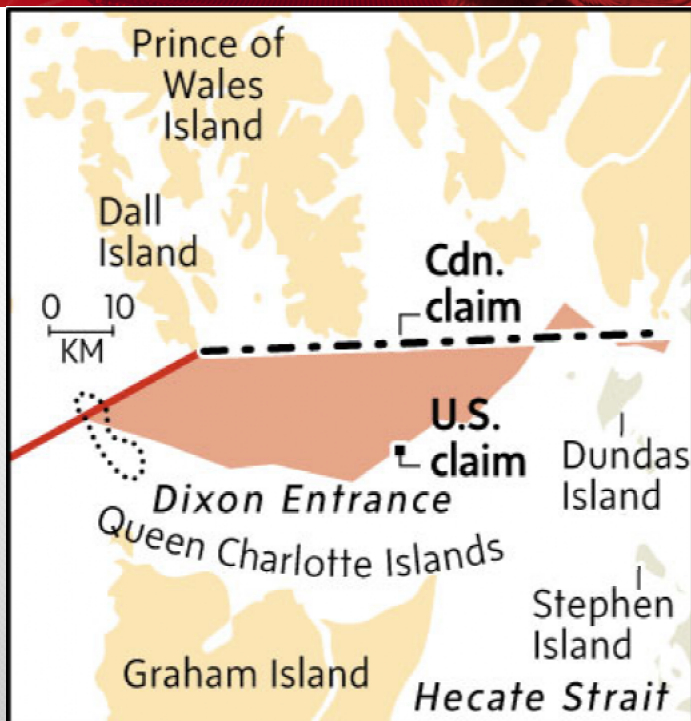
中国科学院



Source: Association of Canada Lands Surveyors



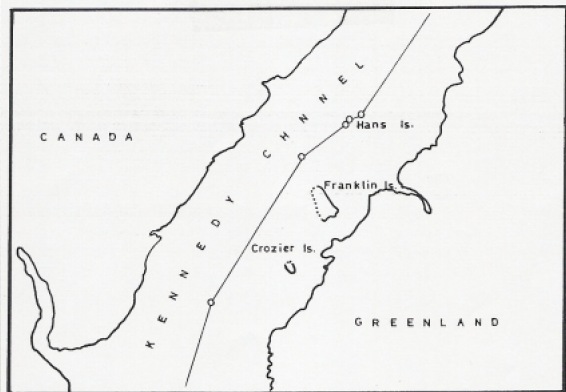
Source: David H. Gray, *Canada's Unresolved Maritime Boundaries*

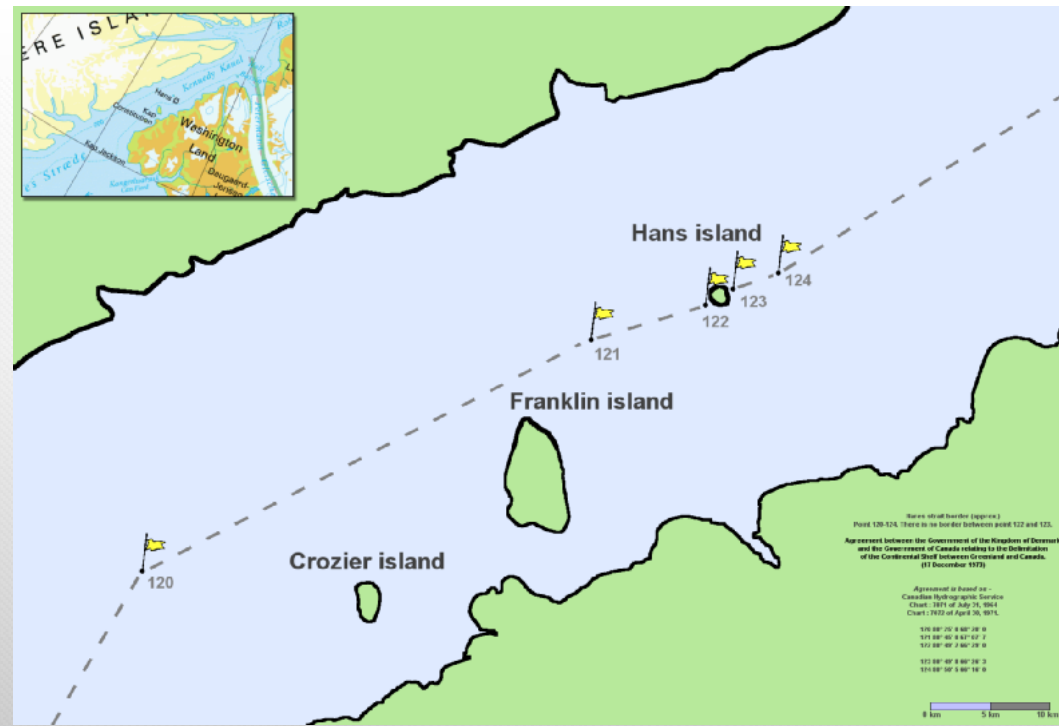


Source: David H. Gray, *Canada's Unresolved Maritime Boundaries*



Source: ArcticEcon

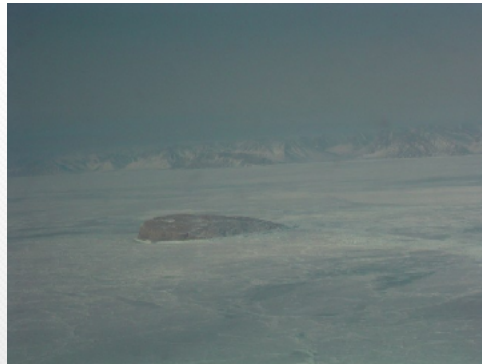


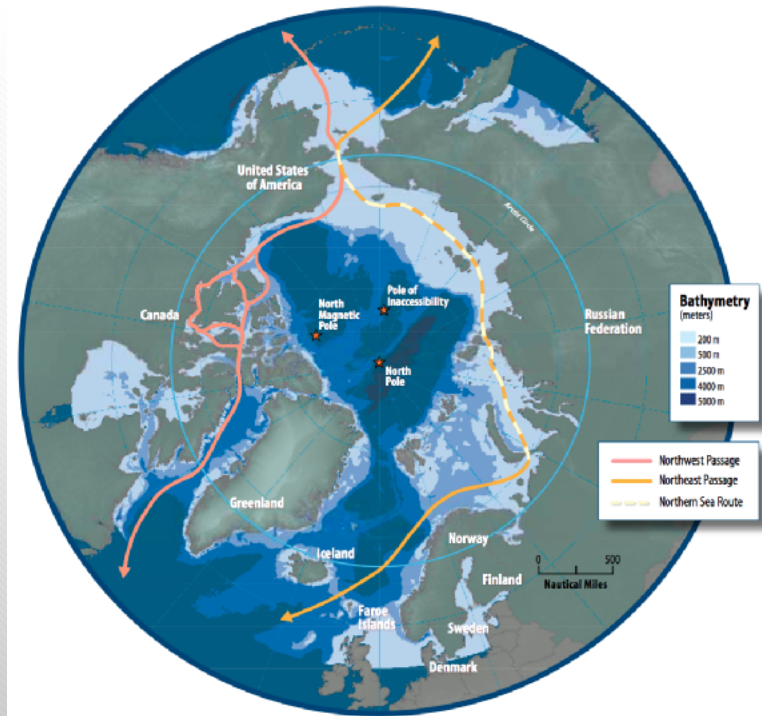


Source: Lasse Jensen



Hans Island is 1.3 square kilometres in area





Source: Arctic Council - Arctic marine shipping assessment



Source: The Economist

- **Council Members:**

- **Canada**
- **Kingdom of Denmark**
- **Finland**
- **Iceland**
- **Norway**
- **Russian Federation**
- **Sweden**

- **Observers to the Arctic Council:**

- **France**
 - **Germany**
 - **The Netherlands**
 - **Poland**
 - **Spain**
 - **United Kingdom**
 - **People's Republic of China**
 - **Italian Republic**
 - **Japan**
 - **Republic of Korea**
 - **Republic of Singapore**
 - **Republic of India**
-



Thank you!
谢谢!
